

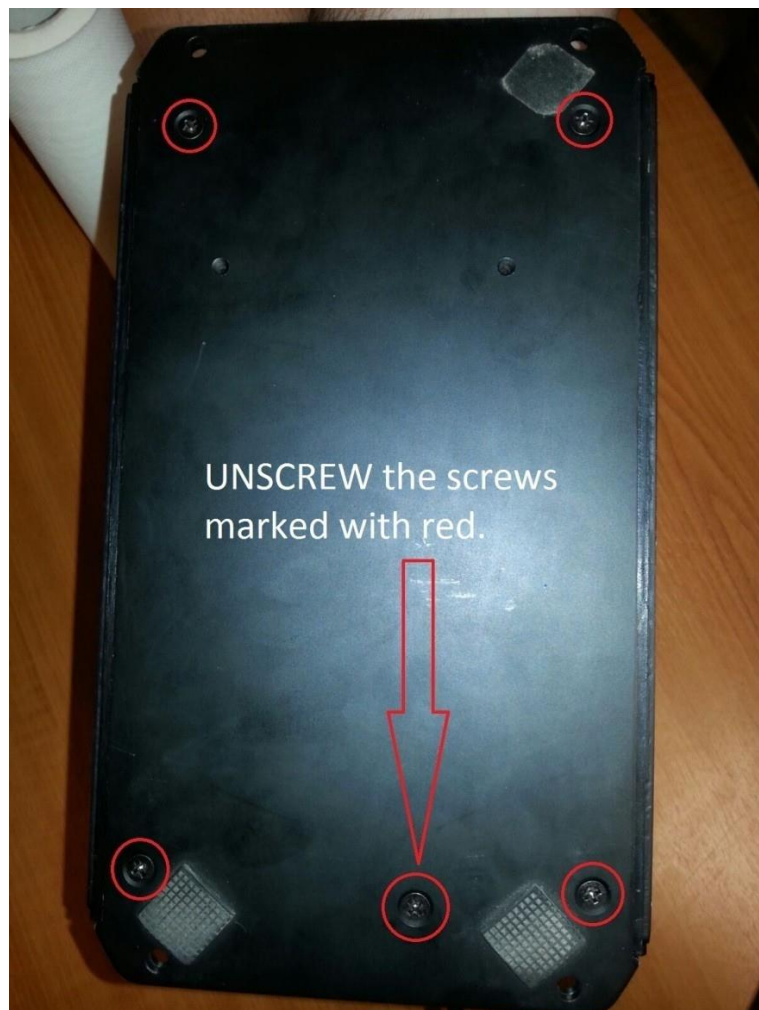
Thrustmaster HOTAS Warthog

Throttle Main PCB replacement.

In order to successfully replace the main PCB on the throttle you will have to follow the instructions below.

*** Disclaimer: Please read this procedure carefully before starting to follow its steps. In order for the PCB replacement to be successful and to prevent any damage, you need to follow the steps below precisely and in the correct order.

1. Before you proceed to replacing the main PCB you must make sure that the throttle is **not** connected to a USB port. If it is, please disconnect it to prevent accidents for both you and the throttle.



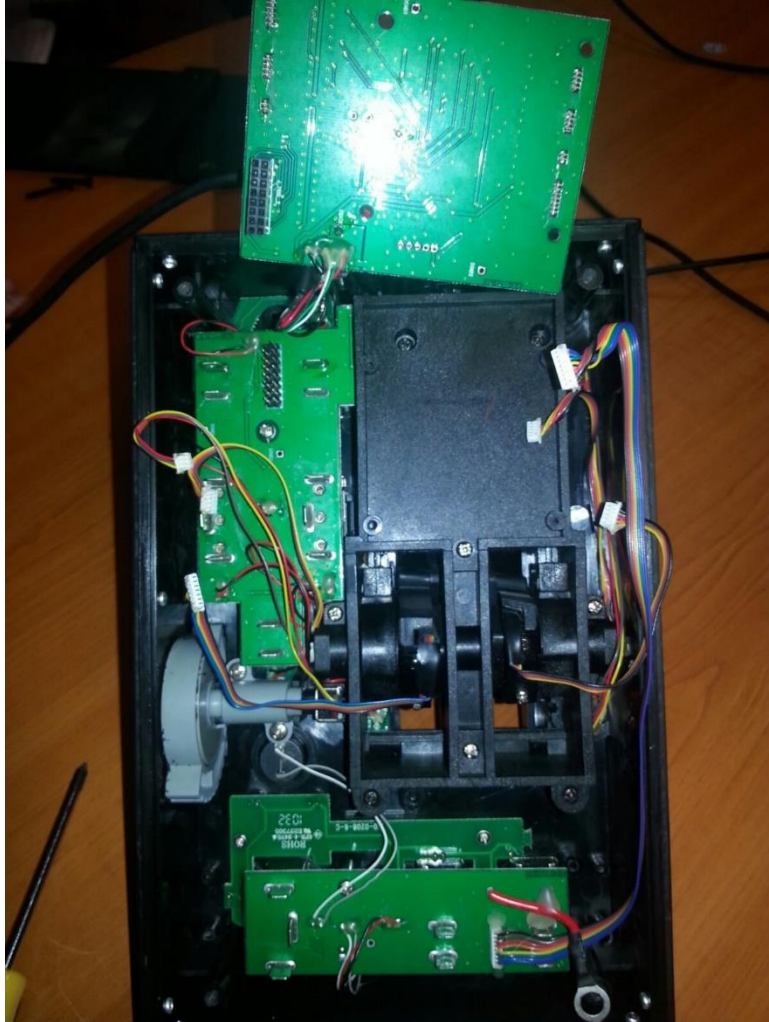
2. Unscrew the marked screws, make sure not to lose them.



3. Gently remove the metal plates to reveal the main PCB connectors.

As shown in the picture above, please mark the connectors with letters or numbers so that you may know where each one plugs in on the main PCB.

Each connector has a hot glue protection on it, that has to be gently removed with a flat screwdriver.



4. After you remove the old/faulty main PCB, proceed to replacing it with the new one, and follow the steps backwards, from no.3 > no.1, as described in this procedure.

Finalizing the procedure:

- Check the connectors for any loose connections. If possible, you can use some hot glue to secure the connectors.
- Check that you have the grounding wires in place.
- Update the firmware of the new throttle, by using the instructions available on our technical support website.
- Calibrate your Throttle by following instructions of the calibration tool provided by our technical support service.